

GMR 21/41

marine radar



© 2006 Garmin Ltd. or its subsidiaries

Garmin International, Inc.
1200 East 151st Street,
Olathe, Kansas 66062, USA
Tel. (913) 397.8200 or (800) 800.1020
Fax (913) 397.8282

Garmin (Europe) Ltd.
Unit 5, The Quadrangle,
Abbey Park Industrial Estate,
Romsey, SO51 9DL, UK
Tel. +44 (0) 870.8501241 (outside the UK)
0808 2380000 (within the UK)
Fax +44 (0) 870.8501251

Garmin Corporation
No. 68, Jangshu 2nd Road,
Shijr, Taipei County, Taiwan
Tel. 886/2.2642.9199
Fax 886/2.2642.9099

All rights reserved. Except as expressly provided herein, no part of this manual may be reproduced, copied, transmitted, disseminated, downloaded or stored in any storage medium, for any purpose without the express prior written consent of Garmin. Garmin hereby grants permission to download a single copy of this manual onto a hard drive or other electronic storage medium to be viewed and to print one copy of this manual or of any revision hereto, provided that such electronic or printed copy of this manual must contain the complete text of this copyright notice and provided further that any unauthorized commercial distribution of this manual or any revision hereto is strictly prohibited.

Information in this document is subject to change without notice. Garmin reserves the right to change or improve its products and to make changes in the content without obligation to notify any person or organization of such changes or improvements. Visit the Garmin Web site (www.garmin.com) for current updates and supplemental information concerning the use and operation of this and other Garmin products.

Garmin®, GPSMAP®, AutoLocate®, TracBack®, BlueChart®, and MapSource® are registered trademarks of Garmin Ltd. or its subsidiaries and may not be used without the express permission of Garmin.



INTRODUCTION

This manual covers the features and operation of the GMR 21/41 marine radar when viewed on a Garmin marine network chartplotter.

Installing Your GMR 21/41

To install your GMR 21/41, refer to the *GMR 21/41 Installation Instructions* included in this box. If you experience difficulty installing the radar, contact Garmin Product Support or an installation professional in your area.

About This Manual

To get the most out of your GMR 21/41, take time to read this manual and learn the operating procedures in detail. This manual is organized into the following sections.

The **Introduction** sections contains the Table of Contents, Product Registration, and Software License Agreement.

The **Basic Operation** section describes the features and operation of the GMR 21/41.

The **Appendix** contains specifications, regulatory information, and maintenance information. You can also find warranty, European Licensing Requirements, and FCC information in the Appendix.

An **Index** is provided at the end of the manual for reference.

Manual Conventions



This manual uses the term **Warning** to indicate a potentially hazardous situation, which, if not avoided, could result in death or serious injury.



This manual uses the term **Caution** to indicate a potentially hazardous situation, which, if not avoided, may result in minor injury or property damage. It may also be used without the symbol to alert you to avoid unsafe practices.

Table of Contents

Introduction	i
Installing Your GMR 21/41	i
About This Manual	i
Manual Conventions.....	i
Product Registration	iii
Contact Garmin.....	iii
Software License Agreement	iii
Warning	iv
Important Information	iv
Basic Operation	1
Understanding Radar	1
Understanding the Radar Display.....	2
Radar Page	3
Configuring the Radar Page.....	3
Using the Radar Adjustment Menu	4
Map Page Radar Overlay	9
Radar Tab	10
General Sub Tab.....	10
Display Sub Tab.....	11
MARPA Sub Tab.....	12
Advanced Sub Tab.....	13

Appendix	14
Specifications	14
European License Requirements	15
Declaration of Conformity (DoC)	15
Limited Warranty	16
FCC Compliance	17
Industry Canada Compliance	17
Index	18

Product Registration

Help us better support you by completing our online registration today! Connect to our Web site at www.garmin.com/registration/.

Use this area to record the serial number (8-digit number located on the bottom of the GMR 21/41) in case your GMR 21/41 needs service. Keep the original sales receipt, or a photocopy, in a safe place.

Serial Number: ____

Contact Garmin

Contact Garmin if you have any questions while using your GMR 21/41. In the USA contact Garmin Product Support by phone: (913) 397-8200 or (800) 800-1020, Monday–Friday, 8 AM–5 PM Central Time; or go to www.garmin.com/support/, and click **Product Support**.

In Europe, contact Garmin (Europe) Ltd. at +44 (0) 870.8501241 (outside the UK) or 0808 2380000 (within the UK).

Software License Agreement

BY USING THE GMR 21/41, YOU AGREE TO BE BOUND BY THE TERMS AND CONDITIONS OF THE FOLLOWING SOFTWARE LICENSE AGREEMENT. PLEASE READ THIS AGREEMENT CAREFULLY.

Garmin grants you a limited license to use the software embedded in this device (the “Software”) in binary executable form in the normal operation of the product. Title, ownership rights, and intellectual property rights in and to the Software remain in Garmin.

You acknowledge that the Software is the property of Garmin and is protected under the United States of America copyright laws and international copyright treaties. You further acknowledge that the structure, organization, and code of the Software are valuable trade secrets of Garmin and that the Software in source code form remains a valuable trade secret of Garmin. You agree not to decompile, disassemble, modify, reverse assemble, reverse engineer, or reduce to human readable form the Software or any part thereof or create any derivative works based on the Software. You agree not to export or re-export the Software to any country in violation of the export control laws of the United States of America.



Warning

Failure to avoid the following potentially hazardous situations could result in an accident or collision resulting in death or serious injury.

The radar scanner transmits electromagnetic energy. Ensure that the scanner has been installed according to the recommendations given in this guide, and that all personnel are clear of the scanner before switching to Transmit mode.

For protection from lightning, this installation must conform to NFPA code, section 302. The installation of a lightning protective mast is recommended, and the scanner must be connected to water ground using an 8 gauge copper cable.

WARNING: This product, its packaging, and its components contain chemicals known to the State of California to cause cancer, birth defects, or reproductive harm. This Notice is provided in accordance with California's Proposition 65. See www.garmin.com/prop65 for more information.

Important Information

MAP DATA INFORMATION: One of the goals of Garmin is to provide customers with the most complete and accurate cartography that is available to us at a reasonable cost. We use a combination of governmental and private data sources, which we identify in product literature and copyright messages displayed to the consumer. Virtually all data sources contain some inaccurate or incomplete data. In some countries, complete and accurate map information is either not available or is prohibitively expensive.

The **California Electronic Waste Recycling Act of 2003** requires the recycling of certain electronics. For more information on the applicability to this product, see www.ecycle.org.

BASIC OPERATION

This section covers the features and operation of the GMR 21/41.

Understanding Radar

The GMR 21/41 transmits a narrow beam of microwave energy in a rotating 360° pattern. When the transmitted energy contacts a target, some of that energy is reflected and returned to the scanner. The scanner collects the returned energy for processing and display. Your GMR 21/41 is operated and adjusted using controls on your Garmin Marine Network chartplotter. You can view radar data on the Radar Page or as an overlay on the Map Page. All radar controls are accessible from both pages.

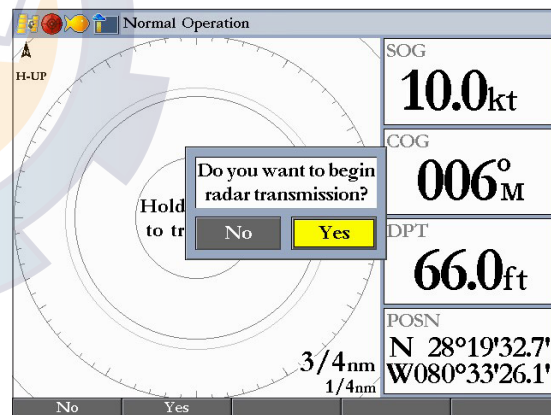
When you turn on the radar, the status bar shows the message “Radar Warming Up” with a countdown to Standby Mode. The countdown also appears in the middle of the Radar Page. When the countdown reaches 0 (zero), the “Hold FCTN to transmit” message appears.

As a safety feature, the radar enters Standby Mode after it warms up. This gives the operator an opportunity to verify that the area around the scanner is clear before beginning radar transmission. It is important to remember that the microwave energy transmitted by the scanner can potentially be dangerous.



CAUTION: The GMR 21/41 transmits microwave energy that has the potential to be harmful to humans and animals. Before beginning radar transmission, verify that the area around the radar is clear. The radar transmits a beam approximately 12° above and below a line extending horizontally from the center of the scanner. Avoid looking directly at the scanner, because the eyes are the most susceptible part of the body.

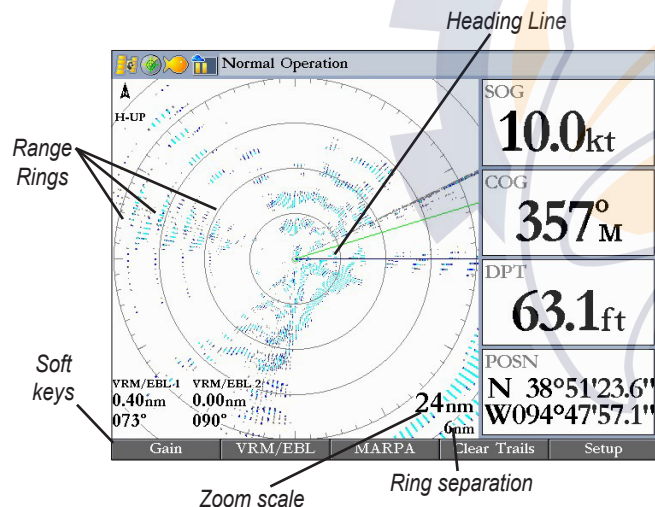
When the area surrounding the scanner is clear, press and hold **FCTN**. The message “Do you want to begin radar transmission?” is shown. Select **Yes**, and then press **ENTER**.



Before transmission begins, the message “Spinning Up” is shown while the radar antenna reaches nominal rotation speed. After the message disappears, the radar begins painting an image.

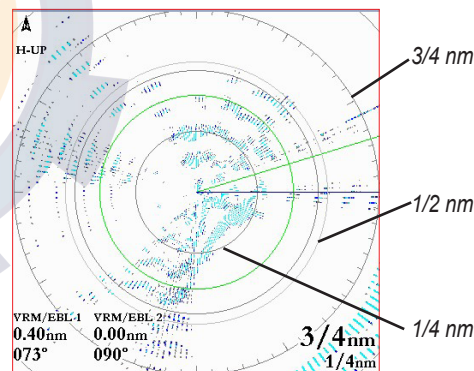
Understanding the Radar Display

The Radar Page shows a status bar along the top, user-configurable digital navigation data down the right side, a Heading Line, and Range Rings. Soft keys that allow quick access to radar functions and setting changes appear along the bottom of the page.



Using Range Rings

Use the Range Rings to quickly determine the distance to a target. The lower-right corner of the screen contains two scales. The scale value represents the distance from the center of the radar display to the outermost complete ring. The top scale represents this value. The bottom scale represents the ring separation or the distance between the Range Rings. Use the **RANGE** keys to zoom in or out. The tick marks on the Range Rings are arranged with major tick marks at 30 degree increments and minor tick marks every five degrees. The tick marks can help in quickly determining the azimuth to a target.



Heading Line

The Heading Line is shown from your current position along the path of your current heading.

Radar Page

With the radar properly installed, when you turn on your Garmin Marine Network chartplotter, it should detect the radar as a new network connection.

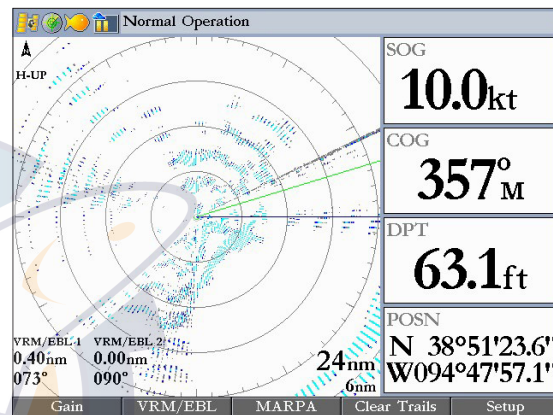


NOTE: A software update may be needed for the radar to function properly. If the message “Incompatible Software Version” appears when you turn on your chartplotter, you must update your chartplotter software. A software update card is provided with the GMR 21/41.

When the new radar is detected, the Radar Page is added to the page sequence. If the Radar Page is not available, press and hold **ADJ/MENU** to open the Main Menu. Highlight the **System** tab, and select **Radar** from the Services list at the bottom of the General sub tab.

To view the Radar Page:

Press **PAGE** repeatedly until the Radar Page appears.



Radar Page

Configuring the Radar Page

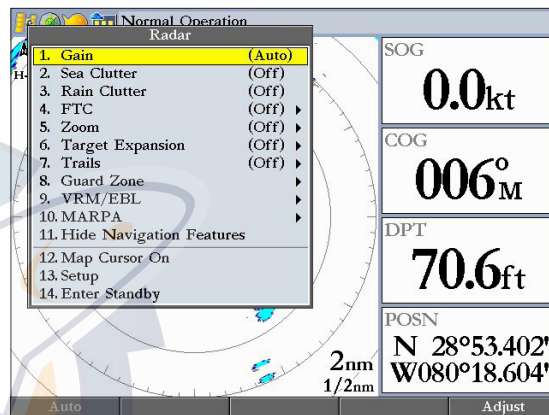
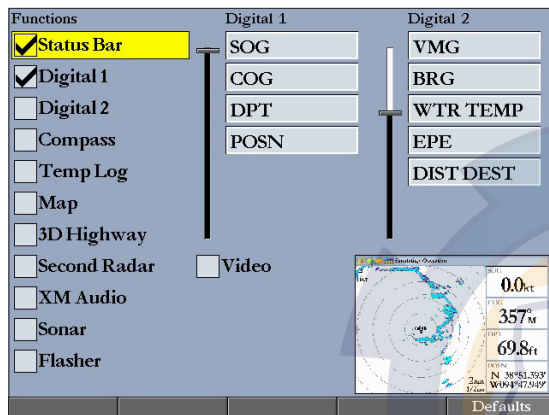
You can customize the appearance of the Radar Page.



NOTE: For detailed information about configuring Digital 1 and Digital 2 data fields, see your chartplotter owner's manual.

To add or remove functions on the Radar Page:

1. Open the Radar Page, and then press and hold the **DATA/CNFG** key to open the Configuration window.



- Using the **ROCKER**, highlight the function you want to add or remove, and press **ENTER**. Only functions with a check mark in the check box next to them appear on the Radar Page.

Using the Radar Adjustment Menu

Use the Radar adjustment menu to access the settings and features most commonly used on the Radar Page including: Gain, Sea Clutter, Rain Clutter, FTC, Zoom, Target Expansion, Trails, Guard Zone, VRM/EBL, MARPA, and Hide/Show Navigation Features.

To select an adjustment option from the Radar Page

- Press **ADJ/MENU** to open the Radar adjustment menu.

- Press up or down on the **ROCKER** to highlight the option you want to change, and then press **ENTER**.

To change a Radar adjustment menu setting:

- Select an adjustment menu option using the method described previously.
- Press up or down on the **ROCKER** to change the setting, range, or percentage.
- Press **ENTER** to accept the change, or press **QUIT** to close the Radar adjustment menu.

Gain

Gain controls the sensitivity of the Radar receiver. **Auto** (default) is the recommended setting. It automatically adjusts the gain for each range scale to provide optimal performance. You can also set gain manually. To see more detail, increase the receiver sensitivity by selecting a higher gain. If there is too much detail, or the screen is cluttered, lower the sensitivity (lower the gain) to increase the clarity of the screen.

Sea Clutter

Sea Clutter controls unwanted screen clutter caused by choppy sea conditions. The slider has three preset positions: **Calm**, **Moderate**, and **Rough**.

Rain Clutter

Rain Clutter controls unwanted screen clutter caused by rain at close ranges (use the slider to select 1-100%).

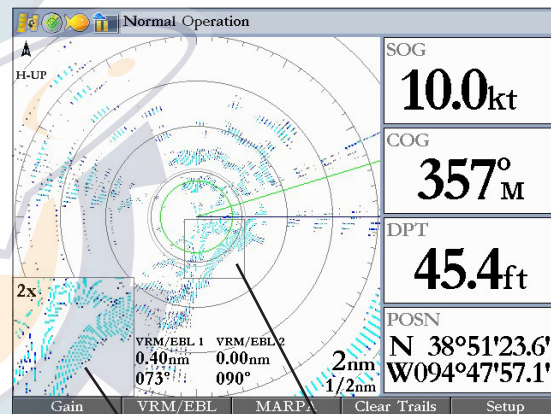
FTC (Fast Time Constant)

FTC controls unwanted screen clutter caused by rain at a distance. The Fast Time Constant settings are: **Off**, **Low**, **Medium**, and **High**.

Zoom

Zoom allows you to zoom in on a selected area of the radar screen. When you select a zoom range, a window showing a zoomed portion of the screen appears in the lower-left corner and a selection box

appears. To view different areas at the selected zoom range, open the Radar adjustment menu, highlight **Zoom**, and press the **Move** soft key. Use the **ROCKER** to move the selection box. Zoom has four settings: **Off**, **2x**, **4x**, and **Move**.



Zoom view

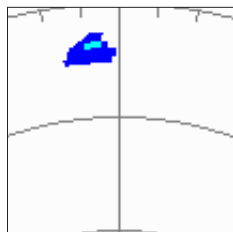
Selection box

Target Expansion

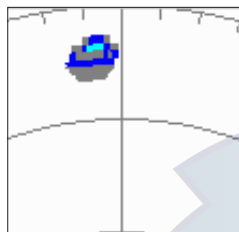
Use Target Expansion to increase the size of targets. Select **On** or **Off**.



NOTE: The Target Expansion setting has no effect at range scales of 4 nm or greater.



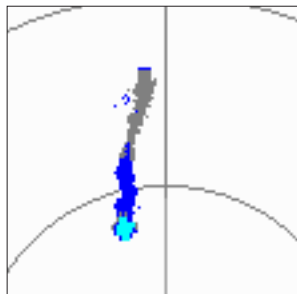
Target Expansion Off



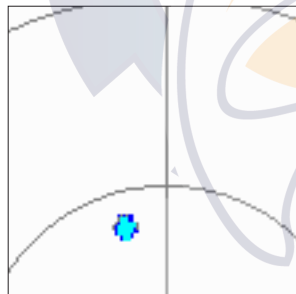
Target Expansion On

Trails

Trails allows you to select whether all returns on the screen leave a history trail, and allows you to determine the length of the history trail (**Off**, **Short**, **Medium**, or **Long**).



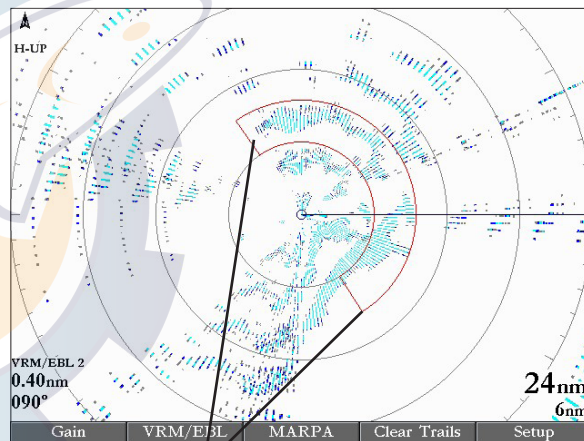
Trails On



Trails Off

Guard Zone

A Guard Zone is a user-defined area of protection. If a target enters the Guard Zone, an alarm sounds. You can define two Guard Zones. The Guard Zone Menu has two areas, “Guard Zone 1” and “Guard Zone 2.” Each area has two settings, **Show (Hide)** and **Adjust**.



Guard Zone

To Define a Guard Zone:

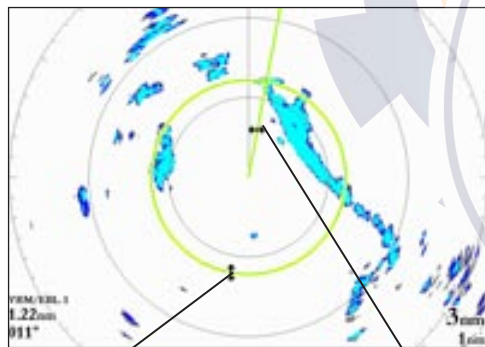
1. Highlight **Show Guard Zone 1 or 2**, and press **ENTER**.
2. Highlight **Adjust**, and press **ENTER**.

- Using the **ROCKER**, define the area on the Radar Page by adjusting three points: **Corner 1**, **Corner 2**, and **Circular**.
- Press **ENTER** to set the Guard Zone.

VRM/EBL

The Variable Range Marker (VRM) and Electronic Bearing Line (EBL) tools measure range and bearing to a target. You can move the center point of the VRM, which allows you to measure from one target to another. Two VRM/EBL tools can be activated at the same time.

The VRM/EBL option has two tools, VRM/EBL 1 and VRM/EBL 2. Each VRM/EBL tool has two settings, **Show (Hide)** and **Adjust**.



Variable Range Marker (VRM)

Electronic Bearing Line (EBL)

To enable VRM/EBL 1 or VRM/EBL 2:

On the Radar adjustment menu, highlight **Show VRM/EBL 1** or **VRM/EBL 2**, and then press **ENTER**.

You can adjust the diameter of the VRM and the angle of the EBL.

To adjust the VRM/EBL:

- Highlight **Adjust**, and press **ENTER**.
- Press right or left on the **ROCKER** to rotate the EBL around the center point of the VRM.
- Press up or down on the **ROCKER** to increase or decrease the size of the VRM.
- Press **ENTER** to accept the changes.

To move the center location of the VRM:

- Highlight **Move**, and press **ENTER**.
- Using the **ROCKER**, move the center point of the VRM to the selected location.
- Press **ENTER** to set the new location.

To use the VRM/EBL, expand the diameter of the VRM so that the outer edge touches the target. Rotate the EBL until it intersects the VRM at the target location. The measured range and bearing are shown in the lower-left corner of the screen.

MARPA

The **Mini Automatic Radar Plotting Aid (MARPA)** function helps with collision avoidance. MARPA can track up to 10 designated targets. Detailed information including bearing, range, course, speed, closest point of approach (CPA), and time to closest point of approach (TCPA) for each target is shown in the MARPA list.



NOTE: MARPA requires the use of a Heading Sensor. The heading sensor must output the NMEA sentence HDM or HDG at format 0183, v2.30 or higher. The Gamin Marine Network was tested using the KVH® 1000 heading sensor using six second dampening.

MARPA relies on a Heading Sensor to provide accurate own vessel heading information. Accurate heading data enhances MARPA's performance. Each target being tracked by MARPA is represented by a symbol. The symbols indicate the current state of the target.

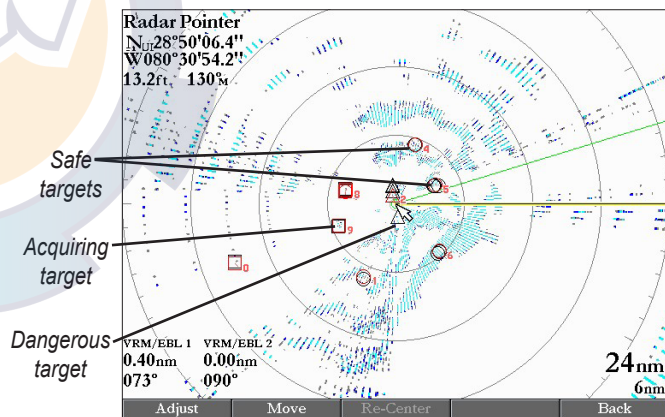
-  *Acquiring target*
-  *Target is safe*
-  *Target is dangerous*
-  *Lost target*

For each target, a number and Vector Line is shown with the symbol. The number is the MARPA list ID number. The Vector Line is a visual reference of the target's course and speed.

To designate a MARPA target:

1. Use the **ROCKER** to move the pointer to the target location.
2. Press the **Acquire Target** soft key.

When acquiring a target, a red box appears around the target. When MARPA begins tracking the target, the box is replaced with the appropriate symbol.



To view the MARPA List:

Press the **MARPA List** soft key.

ID	Bearing	Range	Course	Speed	CPA	TCPA
0	184°	5.3nm	000°	1.2kt	0.3nm	04:18:04
1	286°	4.6nm	116°	0.3kt	1.5nm	21:30:59
2	174°	1.9nm	304°	3.6kt	1.5nm	00:20:49
3	004°	3.4nm	277°	1.7kt	3.4nm	Passed
4	202°	7.6nm	139°	6.6kt	6.7nm	Passed
5	188°	10.0nm	099°	12.4kt	10.0nm	Passed
6	173°	8.5nm	294°	105kt	7.3nm	00:02:29
7	087°	1.6nm	257°	126kt	0.3nm	00:00:45
---	---	---	---	---	---	---
---	---	---	---	---	---	---
---	---	---	---	---	---	---

Enter Standby (Begin Transmitting)

The **Enter Standby (Begin Transmitting)** option allows you to select whether the radar is in Standby Mode or is transmitting. Select **Enter Standby** to place the radar into Standby Mode. While in Standby Mode, the radar does not transmit, but power remains applied to the Magnetron. Select **Begin Transmitting** to remove the radar from Standby Mode. After the radar completes “Spinning Up,” the radar begins transmitting.

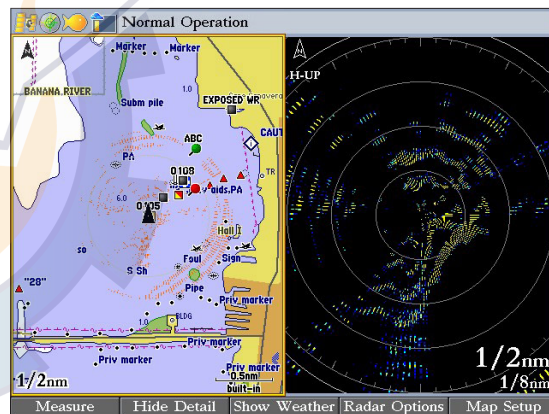
Map Page Radar Overlay

Radar information can be shown as an overlay on the Map Page.

When you overlay radar information on the Map Page, press **ADJ/MENU** to access radar options.



NOTE: Changing the map scale does not change the radar range. When you zoom in or out on the Map Page, the radar overlay is scaled to fit.



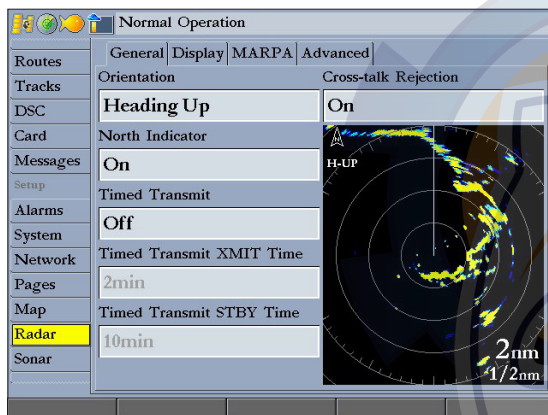
Map Page with Radar Overlay and Radar Page

To overlay radar data on the Map Page:

1. On the Map Page, press the **Show Radar** soft key.
2. To hide the radar overlay, press the **Radar Options** soft key, and then press the **Hide Radar** soft key.

Radar Tab

When GMR 21/41 is connected to a Garmin Marine Network chartplotter, and either the **Auto-Detect Services** or **Radar** check box is selected on the System tab, the Radar tab appears on the Main Menu.



To access and change a setting on the Radar tab:

1. Press the **Setup** soft key on the Radar Page to open the Main Menu. The Radar tab is automatically selected.
2. Highlight the setting you want to change, and then press **ENTER**.
3. Press **QUIT** to return to the Radar Page.

General Sub Tab

Use the General sub tab to select orientation, timed transmit, and cross-talk rejection. The available General sub tab options are:

- **Orientation**—sets the orientation of the Radar Page display. The settings are **Heading Up**, **North Up**, or **Course Up**.
- **North Indicator**—toggles the north indicator arrow on or off.
- **Timed Transmit**—used to save power, usually while at anchor. When Timed Transmit is **On**, the radar uses the settings in **Timed Transmit XMIT Time** and **Timed Transmit STBY Time** fields. When set to **Off**, these fields are unavailable.
- **Timed Transmit XMIT Time**—sets the amount of time (in minutes) for which the radar transmits. If set to 01 min, the radar transmits for one minute before switching to standby for the amount of time entered in the **Timed Transmit STBY Time** field.
- **Timed Transmit STBY Time**—sets the amount of time (in minutes) that the radar is in Standby Mode. If set to 10 min, the radar is in Standby Mode for 10 minutes before switching to transmission for the amount of time entered in the **Timed Transmit XMIT Time** field. When the radar is in Standby Mode, the scanner does not rotate or transmit; however, power is still applied to the Magnetron, eliminating the need for a warm-up cycle.

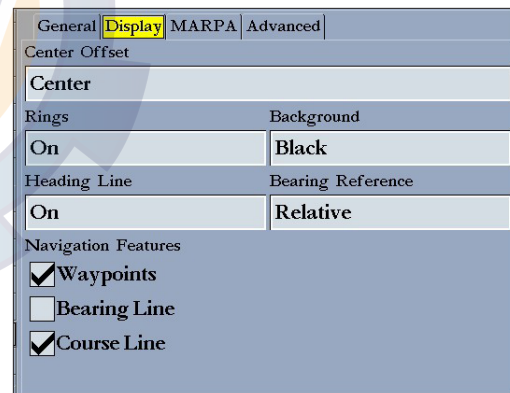
- **Cross-talk Rejection**—toggles cross-talk rejection on or off. Radar cross-talk may occur when two or more radar equipped vessels are operating in proximity to one another. Cross-talk rejection automatically filters out the cross-talk interference.

Display Sub Tab

Use the Display sub tab to adjust settings for: Center Offset, Rings, Background color, Heading Line, Bearing Reference, and Navigation Features. The available Display sub tab options are:

- **Center Offset**—sets your location on the screen. **Center** places your current location in the center of the screen. **Look Ahead** shifts your current location toward the bottom of the screen, allowing you to view an area farther ahead. **Auto Shift** adjusts your location on the screen according to the current speed.
- **Rings**—toggles the radar rings on or off.
- **Background**—sets the background color for the Radar Page. Available options are **Black**, **Blue**, or **White**.
- **Heading Line**—toggles the Heading Line on or off.
- **Bearing Reference**—sets your bearing, either **Absolute** or **Relative**. **Relative** calculates the bearing relative to your vessel's heading. **Absolute** calculates the bearing relative to North.

- **Navigation Features**—allows you to show or hide navigational features on the Radar Page. Use the **ROCKER** and the **ENTER** key to select or clear options.
- **Waypoints**—show user waypoints on the Radar Page.
- **Bearing Line**—show a bearing line on the Radar Page. The bearing line appears as a line from your current position to the active destination waypoint.
- **Course Line**—show a course line from your starting point to the active destination waypoint, which is similar to navigation on a map.



General		Display	MARPA	Advanced
Center Offset				
Center				
Rings		Background		
On		Black		
Heading Line		Bearing Reference		
On		Relative		
Navigation Features				
<input checked="" type="checkbox"/> Waypoints				
<input type="checkbox"/> Bearing Line				
<input checked="" type="checkbox"/> Course Line				

MARPA Sub Tab

The MARPA sub tab contains settings for Vector Length, Target History, Own Vessel Safe Zone, Time To Safe Zone, Safe Ring Zone, and Velocity Reference.

General	Display	MARPA	Advanced
Vector Length		Target History	
6 min		Off	
Own Vessel Safe Zone		Time To Safe Zone	
0.5 nm		3 min	
Safe Zone Ring		Velocity Reference	
Hide		Relative	

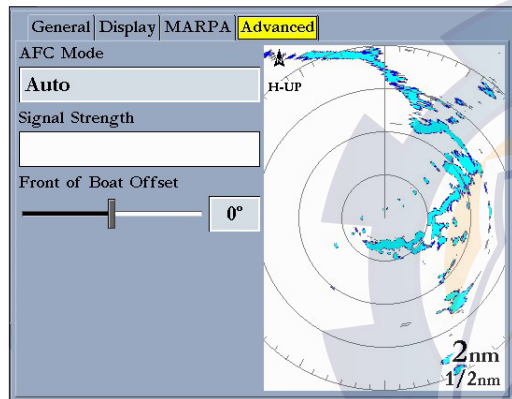
The available MARPA sub tab options are:

- **Vector Length**—predicts the target's approximate position at a set time interval. This setting determines the length of the Vector Line, based on the time interval setting and the target's speed. The time interval settings range from .05 minutes to 60 minutes.
- **Target History**—is a trail showing a target's movement. Target History can be turned **On** or **Off**.

- **Own Vessel Safe Zone**—is a circular area defined by a range setting that is centered on your own vessel. If a target enters the defined area an alarm is sounded. The Safe Zone can be set to a distance between .01 and 2 nautical miles.
- **Time To Safe Zone**—sounds an alarm if MARPA determines that a target will intersect the Own Vessel Safe Zone within the defined time interval. The time interval settings range from 3 to 24 minutes.
- **Safe Zone Ring**—displays a ring on the Radar Page depicting the Own Vessel Safe Zone.
- **Velocity Reference**—has two settings, **Absolute** and **Relative**. This setting determines how speed and direction are shown on the MARPA list. **Relative** calculates target speed and direction relative to your own. **Absolute** shows the target's actual speed.

Advanced Sub Tab

Use the Advanced sub tab to set the AFC Mode and the front of boat offset.



The available Advanced sub tab settings are:

- **AFC Mode**—sets how the scanner frequency is adjusted. Select **Auto** to automatically adjust the scanner frequency for optimal performance (recommended). Select **Manual** to set the frequency manually.

To manually adjust the scanner frequency:

1. Highlight the **AFC Mode** field, and press **ENTER**.
2. Select **Manual**, and press **ENTER**.
3. Highlight the **Freq** button to the right of the **AFC Mode** field, and press **ENTER**.



NOTE: The **Freq** button is available only available if **Manual** is selected in the **AFC Mode** field.

4. Press up or down on the **ROCKER** to adjust the scanner frequency.
5. Press **ENTER** to accept the frequency change.



NOTE: The **Signal Strength** bar graph is damped and may be slow when responding to frequency tuning changes.

- **Signal Strength**—Shows the strength of the radar signal.
- **Front of Boat Offset**—allows you to offset the front of the boat if you mount the radar at an angle.

APPENDIX

Specifications

Unit Dimensions: 24" D x 8" H (610 mm x 205 mm)

Cable Length: 15 meters

Radar Scanner Weight: Unit 26 lbs; cable 8.35 lbs

Range Scales (Range Rings)

GMR 21—1/8 nm (1/32 nm) to 24 nm (6 nm)

GMR 41—1/8 nm (1/32 nm) to 36 nm (9 nm)

Power Output

GMR 21—2 kW

GMR 41—4 kW

Power Input Source: 10.5–35 VDC, 28 W

Operating Temperature Range: -15°C to 70°C, and a relative humidity up to 95% at 35°C

Beamwidth: Horizontal beamwidth of 3.6° nominal / vertical beamwidth of 25° nominal

Wind Velocity: Wind speed up to 100 kts

Antenna RPMs: 24 rpm

Range Ring Accuracy: 20 meters or +/- 1.5% of range scale, whichever is greater

Bearing Accuracy: 1 degree

Minimum Range: 20 meters

Range Discrimination: 20 meters

Sensitivity and Tune Controls: Gain, Sea Clutter, Rain Clutter, Frequency Tune

FTC: Low, Medium, High

Radar/Chart Synchronization: Overlay Mode; split overlay with standard radar presentation.

Off Center Function: Look Ahead, Auto Shift, and Manual

RF Transmit Frequency: 9410 ± 30 MHz

Waterproofing: IEC 60529 IPX7

Interference Rejection: Anti-jamming algorithm

MARPA: Tracks up to 10 targets

European License Requirements

The following table shows European License requirements for the GMR 21/41.

Austria	I	Luxembourg	I
Belgium	G	The Netherlands	I
Czech Republic	I	Poland	G
Denmark	G	Portugal	G
Estonia	I	Slovakia	*
Finland	I	Slovenia	G
France	G	Spain	*
Germany	G	Sweden	G
Greece	G	United Kingdom	I
Hungary	*	Cyprus	G
Ireland	I	Malta	*
Italy	G	Iceland	G
Latvia	I	Norway	I
Lithuania	G	Switzerland	I

I—requires an individual license for operation.

G—can be operated under a general license or license exemption.

* This product may require licensing in your country of use. Refer to the national radio or telecommunications office or ministry.

Declaration of Conformity (DoC)

Hereby, Garmin, declares that this GMR 21/41 is in compliance with the essential requirements and other relevant provisions of Directive 1999/5/EC.

To view the full Declaration of Conformity, see the Garmin Web site for your Garmin product: www.garmin.com/products/gmr21/. Click **Manuals**, and then select the **Declaration of Conformity** link.

Limited Warranty

This Garmin product is warranted to be free from defects in materials or workmanship for one year from the date of purchase. Within this period, Garmin will, at its sole option, repair or replace any components that fail in normal use. Such repairs or replacement will be made at no charge to the customer for parts or labor, provided that the customer shall be responsible for any transportation cost. This warranty does not cover failures due to abuse, misuse, accident, or unauthorized alteration or repairs.

THE WARRANTIES AND REMEDIES CONTAINED HEREIN ARE EXCLUSIVE AND IN LIEU OF ALL OTHER WARRANTIES EXPRESS, IMPLIED, OR STATUTORY, INCLUDING ANY LIABILITY ARISING UNDER ANY WARRANTY OF MERCHANTABILITY OR FITNESS FOR A PARTICULAR PURPOSE, STATUTORY OR OTHERWISE. THIS WARRANTY GIVES YOU SPECIFIC LEGAL RIGHTS, WHICH MAY VARY FROM STATE TO STATE.

IN NO EVENT SHALL GARMIN BE LIABLE FOR ANY INCIDENTAL, SPECIAL, INDIRECT, OR CONSEQUENTIAL DAMAGES, WHETHER RESULTING FROM THE USE, MISUSE, OR INABILITY TO USE THIS PRODUCT OR FROM DEFECTS IN THE PRODUCT. Some states do not allow the exclusion of incidental or consequential damages, so the above limitations may not apply to you. Garmin retains the exclusive right to repair or replace the unit or software or offer a full refund of the purchase price at its sole discretion. SUCH REMEDY SHALL BE YOUR SOLE AND EXCLUSIVE REMEDY FOR ANY BREACH OF WARRANTY.

To obtain warranty service, contact your local Garmin authorized dealer or call Garmin Product Support for shipping instructions and an RMA tracking number. Securely pack the unit and a copy of the original sales receipt, which is required as the proof of purchase for warranty repairs. Write the tracking number clearly

on the outside of the package. Send the unit, freight charges prepaid, to any Garmin warranty service station.

Online Auction Purchases: Products sold through online auctions are not eligible for rebates or other special offers from Garmin. Online auction confirmations are not accepted for warranty verification. To obtain warranty service, an original or copy of the sales receipt from the original retailer is required. Garmin will not replace missing components from any package purchased through an online auction.

International Purchases: A separate warranty is provided by international distributors for units purchased outside the United States. This warranty is provided by the local in-country distributor and this distributor provides local service for your unit. Distributor warranties are only valid in the area of intended distribution. Units purchased in the United States or Canada must be returned to the Garmin service center in the United Kingdom, the United States, Canada, or Taiwan for service.

Garmin International, Inc.
1200 East 151st Street,
Olathe, Kansas 66062, USA
Tel. (913) 397-8200 or
(800) 800-1020
Fax (913) 397-8282

Garmin Corporation
No. 68, Jangshu 2nd Road,
Shijr, Taipei County, Taiwan
Tel. 886/2.2642.9199
Fax 886/2.2642.9099

Garmin (Europe) Ltd.
Unit 5, The Quadrangle,
Abbey Park Industrial Estate,
Romsey, SO51 9DL, UK
Tel. +44 (0) 870.8501241 (outside the UK)
0808.2380000 (within the UK)
Fax +44 (0) 870.8501251

FCC Compliance

The GMR 21/41 complies with Part 80 of the FCC rules. It has received a grant of equipment authorization, issued under the authority of the FCC.

This equipment generates, uses, and can radiate radio frequency energy and, if not installed and used in accordance with the instructions, may cause harmful interference to radio communications. However, there is no guarantee that interference will not occur in a particular installation. If this equipment does cause harmful interference to radio or television reception, which can be determined by turning the equipment off and on, the user is encouraged to try to correct the interference by one of the following measures:

- Reorient or relocate the receiving antenna.
- Increase the separation between the equipment and the receiver.
- Connect the equipment into an outlet on a circuit different from that to which the receiver is connected.
- Consult the dealer or an experienced radio/TV technician for help.

Industry Canada Compliance

The Garmin 21/41 Marine Radar complies with Industry Canada Standard RSS-138.

INDEX

A

Advanced sub tab 13
AFC mode 13
auto-detect services 10

B

Bearing Line 11
bearing reference 11
begin transmitting 9

C

center offset 11
clutter
 rain 5
 sea 5
configuring
 Radar Page 3
cross-talk rejection 11

D

Declaration of Conformity (DoC) 15
digital navigation data 2
Display sub tab 11

E

EBL 7
enter standby 9
European License Requirements 15

F

Fast Time Constant. *See* FTC
FCC compliance 17
FTC 4

G

gain 5
Garmin Marine Network 8
guard zone 4, 6
 defining 6

H

heading line 2, 11
heading sensor 8
hide/show navigation features 4

I

important information iv

M

main pages
 Radar Page 3–7
manually adjust the radar 13
MARPA 4, 8–9
 list 9
 target 8
MARPA sub tab 12

N

navigation features 4, 11

O

orientation 10
Own Vessel Safe Zone 12

P

product registration iii

R

radar overlay 9
Radar Page 3
 configuring 3
 viewing 3
Radar tab 10–13
 Advanced sub tab 12
 Display sub tab 11
 General sub tab 10
 MARPA sub tab 11
radar warming up 1
rain clutter 4
range rings 2
rings 11

S

safety feature 1
safe zone ring 12
sea clutter 4
signal strength 13
software update 3
soft keys 2

specifications 14
spinning up 2
status bar 1

T

target expansion 4, 5
target history 12
Timed Transmit 10
Timed Transmit STBY Time 10
Timed Transmit XMIT Time 10
Time To Safe Zone 12
trails 4, 6

V

vector length 12
velocity reference 12
VRM 7
VRM/EBL 4
 adjusting 7

W

warming up 1
warranty 16
waypoints 11

Z

zoom 4, 5
Zoom level 5



**For the latest free software updates (excluding map data) throughout the life of your
Garmin products, visit the Garmin Web site at www.garmin.com.**



© 2006 Garmin Ltd. or its subsidiaries

Garmin International, Inc.
1200 East 151st Street, Olathe, Kansas 66062, USA

Garmin (Europe) Ltd.
Unit 5, The Quadrangle, Abbey Park Industrial Estate, Romsey, SO51 9DL, UK

Garmin Corporation
No. 68, Jangshu 2nd Road, Shijr, Taipei County, Taiwan

www.garmin.com

Part Number 190-00665-00 Rev. B